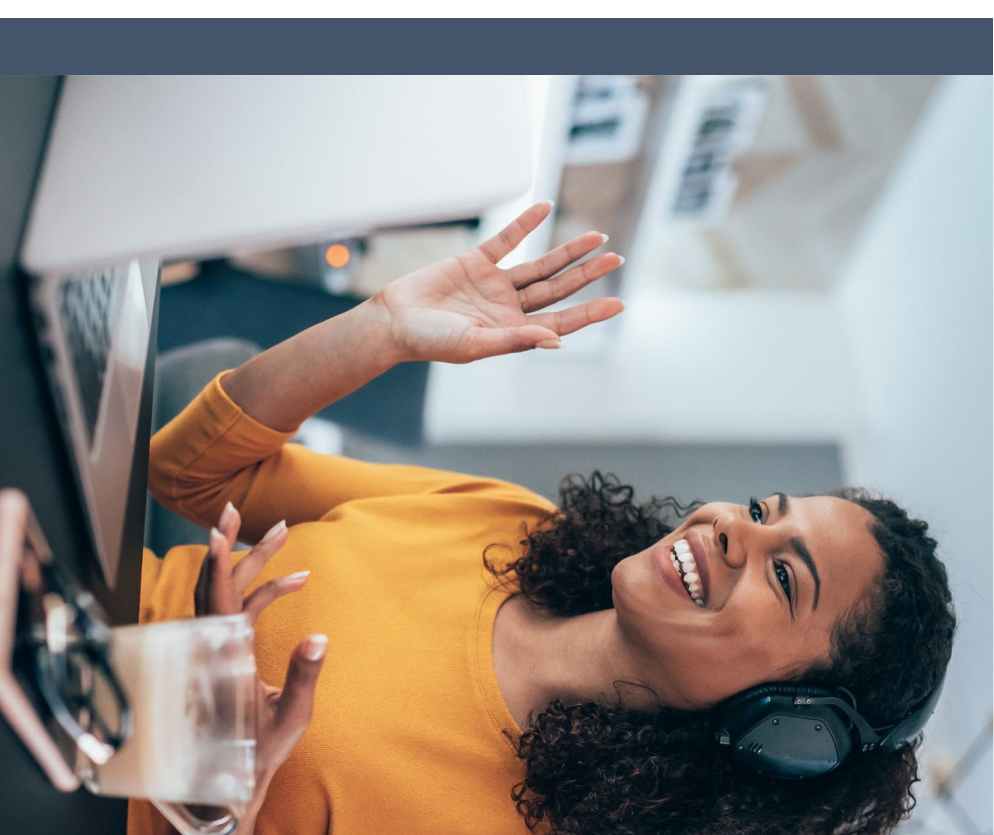


# LTI Pro data storage & processing

---

November 2020



# Agenda

LTI Pro - What data does it handle?

App Marketplace - Where data is



# LTI Pro

---

## What Data does LTI Pro handle?

# LTI Pro - Data

See: <https://zoomappdocs.docs.stoplght.io/lti-pro-v2/admin/privacy>

## Meeting data

Meeting details for each meetings (meeting ID, topic, Description, start time, timezone, alternative hosts, duration, meeting password, join link, meeting settings(video, audio, password, Enable join before host, Mute participants upon entry, Use Personal Meeting ID, Enable waiting room, Only authenticated users can join, Record the meeting automatically in the cloud, Enable additional data center regions for this meeting), meeting invitation which contains join instructions, schedule for which contain all of the user name who assign scheduling privilege to the host)

This information is accessed and used to display details for a meeting within your LMS.

Upcoming meeting (Start time, topic, meeting Id, schedule for which contain all of the user name who assign scheduling privilege to the host) list

This information is accessed and used to find upcoming meetings and display them within your LMS.

Previous meeting (Start time, topic, meeting Id, scheduling privilege information) list

This information is accessed and used to find previous meetings and display them within your LMS.

# LTI Pro - Data

## Tracking Field

Tracking field details (id, field, required, recommended Values)

Used to automatically add the tracking field when creating/updating/importing a meeting

## Recording

Recording information for each recorded meeting (meeting ID, topic, start time, timezone, recording files(file size, download/play link, password))

Used to display recording information for a selected recording.

Recording (meeting ID, topic, start time, file size) list

Used for retrieving and displaying recordings

## Reports

Meeting Report for meetings (meeting Id, meeting topic, username, email, join time, leave time, duration, Attentiveness Score)

Used to display meeting report details for a previous meeting.

Poll Report for each previous meetings (meeting Id, meeting topic, username, email, question, answer)

Used to display poll report details for a previous meeting.

# LTI Pro - Data

## User

User detail(including user id, first name, last name, email, user type, pmi, timezone...)

Used to check if one user have permission to use this app and, to get alternative hosts when create a meeting and to get schedulers of current user 4 get assistants of the current user

## Group

Group Information (id, name): used to automatically assign a user to a group

Group member information (member id): used to automatically assign a user to a group

## Account

Managed/Trusted domains(domain): used to automatically create a user

# App Marketplace

---

Where data is.

# App Metadata

	Source	Storage
app registration (app name, app description, app logo contact email, contact name, company name, category selection)	Customer	US
URLs for app customers (Privacy/Terms of Use/Support/Documentation/Configure)	Customer	US
app feature selection (scopes, webhook events)	Customer	US
OAuth callback URLs for Zoom to invoke	Customer	US
webhook callback URL for Zoom to invoke	Customer	US
chatbot URLs for Zoom to invoke (chat subscription, trusted/Unfurling domains)	Customer	US and Local Cluster
chatbot feature (welcome message, slash commands, slash usage hints)	Customer	US and Local Cluster



# App Installation Data

	Source	Storage
email, installation timestamp	Customer	US
[optional for webhooks] department, title	Customer	US
[optional for app pre-approval] user group name	Customer	US and Local Cluster
[optional for chatbot] IM group name	Customer	US and Local Cluster
authorized scopes	Customer	US and Local Cluster

# App Management Data

	Source	Storage
app id, account id, user id	Zoom	US and Local Cluster
customer app credentials (client id/secret, api key/secret, sdk key/secret, verification token)	Zoom	US and Local Cluster
user tokens	Zoom	Local Cluster
verification token (from Zoom)	Zoom	US
user activity logs (user name, install/uninstall/pre-approval timestamp)	Zoom	US
app metrics logs (# of install/uninstall, account types, etc)	Zoom	US
[optional for marketplace transactional emails] additional customer emails	Customer	US

# App Specific Data

	Source	Storage
Zoom-built apps (i.e. LTI Pro, Epic)	Customer /Zoom	Local Cluster
3rd-party apps (i.e. Zyllo, Hubspot)	Customer /Third party	Third party

NOTE: might transfer via the US (API Transfer Server) but it is stored as per above tables.

# Thank You

Connect With Us

[@zoom\\_us](#) | [blog.zoom.us](#)